

ORIGINAL ARTICLE

BDNF overexpression prevents cognitive deficit elicited by adolescent cannabis exposure and host susceptibility interaction

Hadar Segal-Gavish¹, Neta Gazit², Yael Barhum¹, Tali Ben-Zur¹, Michal Taler³, Shay Henry Hornfeld³, Irit Gil-Ad³, Abraham Weizman^{3,4}, Inna Slutsky², Minae Niwa⁵, Atsushi Kamiya⁵, Akira Sawa⁵, Daniel Offen¹ and Ran Barzilay^{1,4,*}

¹Laboratory of Neuroscience, Felsenstein Medical Research Center, Rabin Medical Center, Beilinson Campus, Sackler Faculty of Medicine, Tel Aviv University, 49100 Petach Tikva, Israel, ²Department of Physiology and Pharmacology, Sackler Faculty of Medicine and Sagol School of Neuroscience, Tel Aviv University, 69978 Tel Aviv, Israel, ³Laboratory of Biological Psychiatry, Felsenstein Medical Research Center, Sackler School of Medicine, Tel Aviv University, 49100 Petach Tikva, Israel, ⁴Research Unit, Geha Mental Health Center, 49100 Petach Tikva, Israel and ⁵Department of Psychiatry and Behavioral Sciences, Johns Hopkins University School of Medicine, Baltimore, MD, USA

*To whom correspondence should be addressed at: Laboratory of Neuroscience, Felsenstein Medical Research Center, Rabin Medical Center, Beilinson Campus, Sackler Faculty of Medicine, Tel Aviv University, Petach Tikva 49100, Israel. Tel: +972 523020443; Fax: +972 775251518; Email: barzilayr@post.tau.ac.il; barzilayr@gmail.com

Abstract

Cannabis abuse in adolescence is associated with increased risk of psychotic disorders. Δ -9-tetrahydrocannabinol (THC) is the primary psychoactive component of cannabis. Disrupted-In-Schizophrenia-1 (DISC1) protein is a driver for major mental illness by influencing neurodevelopmental processes. Here, utilizing a unique mouse model based on host (DISC1) X environment (THC administration) interaction, we aimed at studying the pathobiological basis through which THC exposure elicits psychiatric manifestations. Wild-Type and dominant-negative-DISC1 (DN-DISC1) mice were injected with THC (10 mg/kg) or vehicle for 10 days during mid-adolescence-equivalent period. Behavioral tests were conducted to assess exploratory activity (open field test, light-dark box test) and cognitive function (novel object recognition test). Electrophysiological effect of THC was evaluated using acute hippocampal slices, and hippocampal cannabinoid receptor type 1 and brain-derived neurotrophic factor (BDNF) protein levels were measured. Our results indicate that THC exposure elicits deficits in exploratory activity and recognition memory, together with reduced short-term synaptic facilitation and loss of BDNF surge in the hippocampus of DN-DISC1 mice, but not in wild-type mice. Overexpression of BDNF in the hippocampus of THC-treated DN-DISC1 mice prevented the impairment in recognition memory. The results of this study imply that induction of BDNF following adolescence THC exposure may serve as a homeostatic response geared to maintain proper cognitive function against exogenous insult. The BDNF surge in response to THC is perturbed in the presence of mutant DISC1, suggesting DISC1 may be a useful probe to identify biological cascades involved in the neurochemical, electrophysiological, and behavioral effects of cannabis related psychiatric manifestations.

Received: February 15, 2017. Revised: April 5, 2017. Accepted: April 6, 2017

© The Author 2017. Published by Oxford University Press. All rights reserved. For Permissions, please email: journals.permissions@oup.com

Introduction

Psychotic disorders are increasingly considered as disorders of brain development (1). While it is widely accepted that host-environment interactions contribute to the pathogenesis of psychotic disorders (2,3), the biological mechanisms that mediate such interactions are unclear. Thus, utilizing animal models for investigating synergistic effects between a candidate gene and an environmental factor may provide better understanding of the complicated mechanisms underlying genetic susceptibility for different environmental insults.

Cannabis is the most commonly used illicit drug among adolescents in the U.S. (4) and in Europe (5), and is increasingly becoming legalized for recreational use (6). The consequences of cannabis use during adolescence is of increased concern due to its deleterious effects on brain development (7). Several studies have shown that cannabis use during adolescence increases the risk of developing first episode psychosis as well as various psychotic disorders later in life (8–12). Recent studies suggest that the primary psychoactive component of cannabis, Δ^9 -tetrahydrocannabinol (THC), interferes with maturational and developmental processes in the brain of adolescents and causes psychopathological effects, such as disinhibition and neurocognitive abnormalities, especially in learning and memory processes (13–15). Nevertheless, merely a small fraction of adolescent cannabis users develop a psychotic disorder. One possible explanation is that certain individuals are genetically susceptible to mental illness. This explanation is supported by a recent study reporting that cannabis use in early adolescence moderates the association between the genetic risk for schizophrenia and cortical maturation among male individuals (16).

The *Disrupted-In-Schizophrenia-1* (*DISC1*) gene was discovered through a unique Scottish pedigree in which a balanced translocation in this gene segregated with severe mental illness including schizophrenia (17). Although abundant research has been conducted since its discovery, currently it is still unclear whether genetic variation in *DISC1* is involved in sporadic cases of schizophrenia in the general population.

DISC1 protein is a molecular driver for major mental illness by influencing biological processes that mediate neurodevelopment (18), including progenitor cell proliferation, neurite outgrowth, neuronal migration and synapse formation and maintenance (19,20). *DISC1* is highly expressed in the developing brain, both prenatally and postnatally from birth through adulthood, including the olfactory bulb and hippocampus, regions of adult neurogenesis (21). *DISC1* is an intracellular scaffold protein which interacts with several proteins, thus serving as a hub protein for a variety of cellular processes (22). Therefore, *DISC1* is an attractive target for studying the biological mechanisms that underpin host susceptibility to mental illness induced by environmental insults during brain development.

In a previous work from our team, we studied the long lasting effect of adolescence THC use in adult mice (23). In the current study, we aimed to investigate the effect of robust THC administration during adolescence in the post adolescent-young adulthood period in order to model the effect of cannabis on susceptible hosts in the context of first episode psychosis. Furthermore, we investigated the biological mechanism of the interaction between perturbed *DISC1* signaling and THC exposure during adolescence. We employed a transgenic mouse model expressing a putative dominant-negative mutant form of *DISC1* (DN-*DISC1*) under the control of the α CaMKII promoter,

thereby restricting its expression to forebrain pyramidal neurons (24). We exposed adolescent DN-*DISC1* mice to sub-chronic THC administration and evaluated the behavioral, biochemical and electrophysiological effects a few days after THC administration. We aimed to recapitulate the clinical presentation of adolescent/early adulthood patients presenting to psychiatry clinics with first clinical signs of a psychotic disorder after robust use of cannabis. This host (DN-*DISC1* mice) X environment (THC administration) experimental paradigm enabled us to study the biological mechanisms through which *DISC1* pathway perturbation interacts with adolescence THC exposure to exert behavioral deficits. Specifically, we investigated the role of BDNF signaling as it was previously suggested to be aberrant in this mouse model (25).

Results

Adolescent THC exposure induces aberrant exploratory activity in DN-*DISC1* mice, but not in WT mice

We first wanted to see whether interaction of THC exposure with genetic aberrations can affect behavioral parameters. WT and DN-*DISC1* mice exposed sub-chronically to THC did not show a decrease in locomotor activity during a 10-min period of exploration in the open field arena (Fig. 1A). Vehicle-treated DN-*DISC1* mice did not differ from vehicle-treated WT mice in terms of time spent in the anxiety-provoking center of the open field arena. Nevertheless, following sub-chronic THC administration, DN-*DISC1* mice spent more time exploring the arena center compared to vehicle-treated DN-*DISC1* mice. This effect was not evident in WT mice exposed to THC. Two-way ANOVA revealed a significant genotype X exposure interaction (Fig. 1B).

In the light-dark box test, THC-treated DN-*DISC1* mice spent the longest period of time exploring the anxiety-provoking light chamber compared to the other experimental groups. Two-way ANOVA revealed a significant main effect of exposure and genotype, though genotype X exposure interaction was nonsignificant (Fig. 1D). Evaluation of the latency to enter the dark compartment of the light-dark box, showed that THC-treated DN-*DISC1* mice demonstrated the longest latency to enter the non-anxiety-provoking dark chamber compared to other experimental groups (Fig. 1E). Main effects of genotype and exposure were significant, however, the genotype X exposure interaction was nonsignificant.

THC interacts with *DISC1* to induce impaired object recognition memory

We examined whether THC would affect cognitive function in our genetically susceptible DN-*DISC1* mice (Fig. 2A). Vehicle-treated WT mice, as well as THC-treated WT mice and vehicle-treated DN-*DISC1* mice displayed intact object recognition memory, manifested by preference to explore the novel object (exploring the novel object more than the familiar object), following a retention period of 1 h. However, DN-*DISC1* mice exposed sub-chronically to THC did not show preference for the novel object, indicating disrupted short-term object recognition memory (Fig. 2B). Two-way ANOVA revealed a significant genotype X exposure interaction (Fig. 2B).

Since object recognition is considered to be a hippocampus-dependent task (26), we aimed to investigate the effect of THC on synaptic function in the CA3-CA1 hippocampal pathway using acute hippocampal slices of an additional cohort of

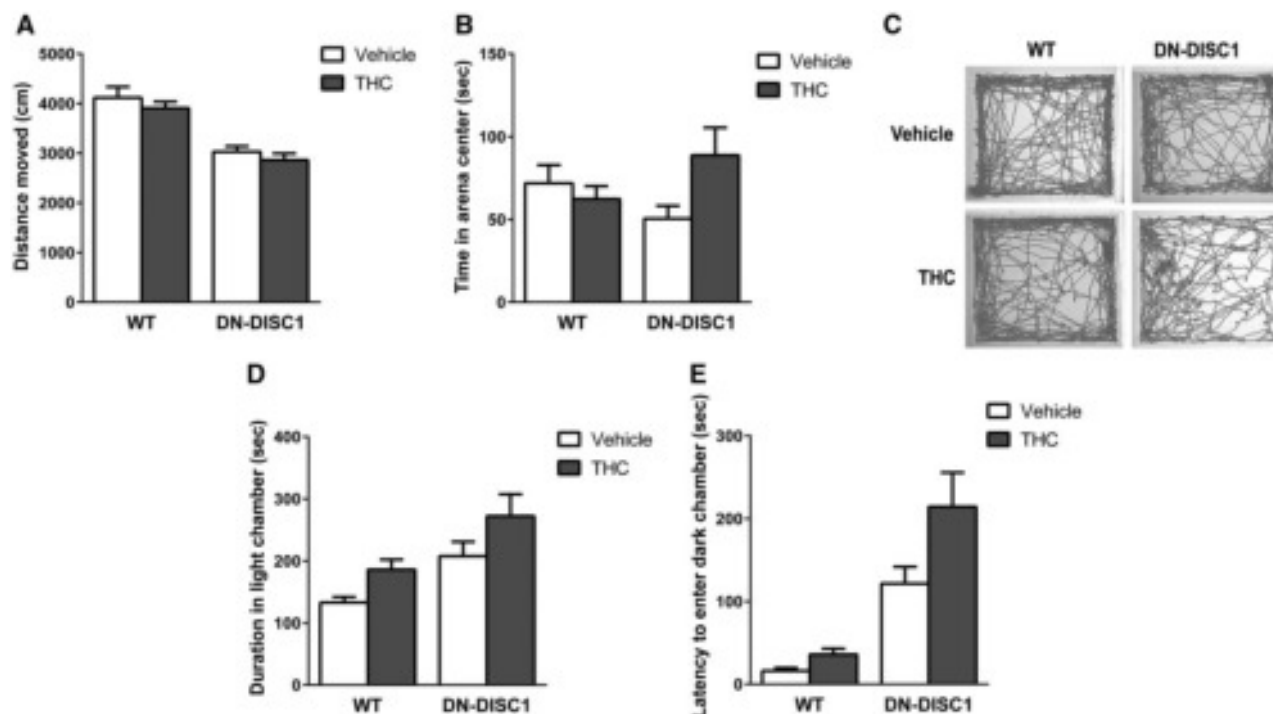


Figure 1. THC interacts with DISC1 to promote aberrant exploratory activity. (A–C) 10-min period of exploration in the open field arena. (A) Wild-type (WT) and dominant negative DISC1 (DN-DISC1) mice did not demonstrate decreased locomotor activity following sub-chronic exposure to THC. Main effect of genotype was statistically significant ($F_{1,37}=45.47$, $P < 0.0001$), but main effect of exposure, and genotype X exposure interaction were not significant ($F_{1,37}=1.43$, $P = 0.24$ and $F_{1,37}=0.02$, $P = 0.89$, respectively). (B) THC-treated DN-DISC1 mice spent more time exploring the arena center compared to vehicle-treated DN-DISC1 mice, but this effect was not evident in WT mice exposed to THC. Genotype X exposure interaction reached significance ($F_{1,37}=4.41$, $P = 0.04$), but main effects of genotype and exposure were both nonsignificant ($F_{1,37}=0.05$, $P = 0.83$ and $F_{1,37}=1.59$, $P = 0.22$, respectively). (C) Illustration of the exploration path in the open field arena tracked by the EthoVision software of a representative mouse from each experimental group. (D–E) Light-dark box test. (D) Time spent in the light chamber. THC-treated DN-DISC1 mice spent the longest period of time exploring the anxiety-provoking light chamber compared with the other experimental groups. Genotype and exposure, both had significant main effects on time spent in the light chamber ($F_{1,37}=12.88$, $P = 0.001$, $F_{1,37}=6.86$, $P = 0.013$, respectively), however, genotype X exposure interaction was nonsignificant ($F_{1,37}=0.07$, $P = 0.8$). (E) Latency to enter the dark chamber. THC-treated DN-DISC1 mice demonstrated the longest latency to enter the dark chamber compared with other experimental groups. Main effects of genotype and exposure were significant ($F_{1,37}=40.43$, $P < 0.0001$, $F_{1,37}=6.375$, $P = 0.016$), respectively but genotype X exposure interaction was nonsignificant ($F_{1,37}=2.67$, $P = 0.11$). Data (Mean + SEM) were obtained from 19 DN-DISC1 males (9 Vehicle and 10 THC) and 22 WT males (11 Vehicle and 11 THC). Statistical significance was determined using two-way ANOVA followed by Tukey's post-hoc test.

DN-DISC1 mice that were treated sub-chronically with THC. First, we measured the effect of THC on input-output relationship in the CA3-CA1 synaptic connections. For this, we recorded field excitatory postsynaptic potential (fEPSP) in the CA1 area evoked by low frequency stimulation (0.1 Hz) of CA3 axons at gradually increased stimulation intensities (Fig 2C). The slope of the input (amplitude of fiber volley)/output (amplitude of fEPSP) curve was similar between THC-treated and vehicle-treated DN-DISC1 mice ($P = 0.58$), indicating that basal CA3-CA1 synaptic transmission was preserved following THC exposure. To examine the influence of THC on short-term synaptic plasticity, a critical determinant of synaptic computation and memory function (26,27), we recorded fEPSP in CA1 stratum radiatum, while stimulating the CA3 axons in the Shaffer Collateral pathway by bursts composed of 5 stimuli at 50 Hz (Fig 2D). THC significantly reduced synaptic facilitation as estimated by a decrease in the relative fEPSP slope within the burst in DN-DISC1 mice, while demonstrating no interaction between THC and stimulus number during the burst. This indicates that for THC-treated DN-DISC1 mice, facilitation in CA3-CA1 connections is decreased equally throughout the burst relative to vehicle-treated controls. Thus, sub-chronic administration of THC reduces high-pass filter properties of CA3-CA1 hippocampal synapses that may contribute to the observed behavioral deficits.

THC administration induces an increase in hippocampal CB1R and BDNF levels in WT mice, but not in DN-DISC1 mice

Next, we evaluated CB1R expression levels in the hippocampus of the mice using western blot analysis. We found a significant genotype X exposure interaction (Fig 3A), as CB1R expression was down regulated following THC administration in the DN-DISC1 mice whereas in the WT mice it was slightly upregulated.

Taking into account that THC is known to upregulate BDNF expression (28–30), we measured BDNF protein levels in the hippocampus using ELISA. In WT mice, sub-chronic administration of THC resulted in a significant increase of 42% in hippocampal BDNF (Fig 3B). However, in DN-DISC1 treated sub-chronically with THC, this increase was not evident, revealing a significant genotype X exposure interaction.

Hippocampal over-expression of BDNF prior to THC administration specifically prevented the deficit in object recognition memory in DN-DISC1 mice

Since WT mice responded to sub-chronic THC administration with a surge in hippocampal BDNF, which was not observed in

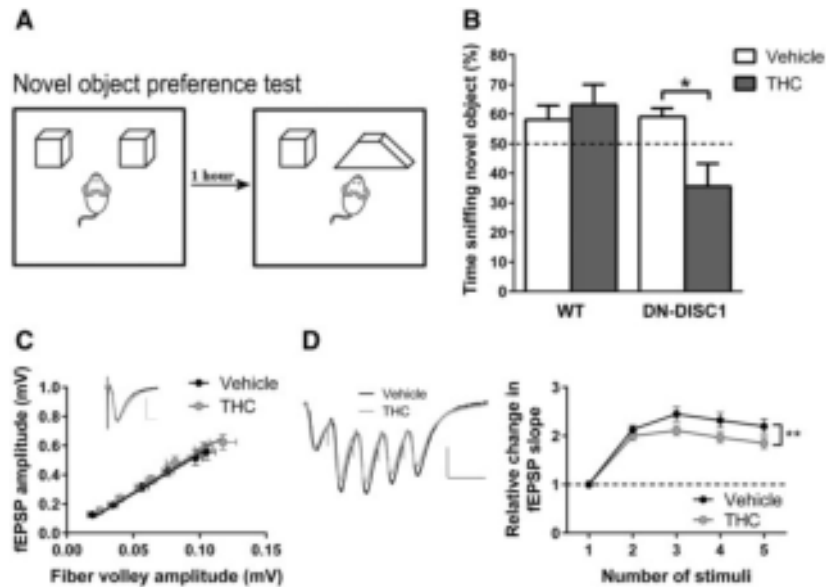


Figure 2. THC interacts with DISC1 to produce impaired object recognition memory. (A) An illustration of the novel object recognition test. (B) Percentage of time spent exploring the novel object relative to the total time spent exploring both objects. Dashed line represents 50% preference indicating no preference to a specific object. A significant genotype X exposure interaction was noted ($F_{1,36}=5.79$, $P=0.021$). Post-hoc analysis indicated that dominant negative DISC1 (DN-DISC1) mice exposed to THC spent significantly less time sniffing the novel object compared to vehicle-treated DN-DISC1 mice ($P=0.046$). Data were obtained from 19 DN-DISC1 males (9 Vehicle and 10 THC) and 22 wild-type (WT) males (11 Vehicle and 11 THC), and presented as Mean \pm SEM. Statistical significance was determined using two-way ANOVA followed by Tukey's post-hoc test. (C,D) fEPSP recordings evoked by low frequency (C) and high-frequency (D) stimulation in CA3-CA1 connections in acute hippocampal slices. (C) Input-output relationship between the amplitude of fiber volley and the amplitude of fEPSP for gradually increasing stimulation intensities was not different between THC- and Vehicle- treated DN-DISC1 mice (nVehicle = 10, NVehicle = 5; nTHC = 10, NTHC = 5; $P=0.58$, unpaired, two-tailed student t-test between the slopes). Insert: Representative fEPSP recordings at 50 μ A stimulation amplitude (black - Vehicle, grey - THC). (D) Left: Representative recordings of fEPSPs in vehicle- (black) and THC-treated (grey) DN-DISC1 mice evoked by a burst: each burst contains 5 stimuli; inter-spike interval, 20 ms; inter-burst interval was 30 s. Right: Evaluation of synaptic facilitation in CA3-CA1 connections. Relative amplitude of fEPSPs within a burst, normalized to the first stimuli in the burst. Facilitation is lower in THC-treated DN-DISC1 mice (10 slices from 5 mice of each group; $F_{1,36}=11.96$, $P=0.0014$). Interaction with stimulus number is non-significant ($F_{3,36}=0.39$, $P=0.76$). Data were averaged from 10 DN-DISC1 males (5 Vehicle and 5 THC). Data are presented as Mean \pm SEM. Statistical analysis was performed using two-way ANOVA with repeated measurements. * $P < 0.05$. ** $P < 0.01$.

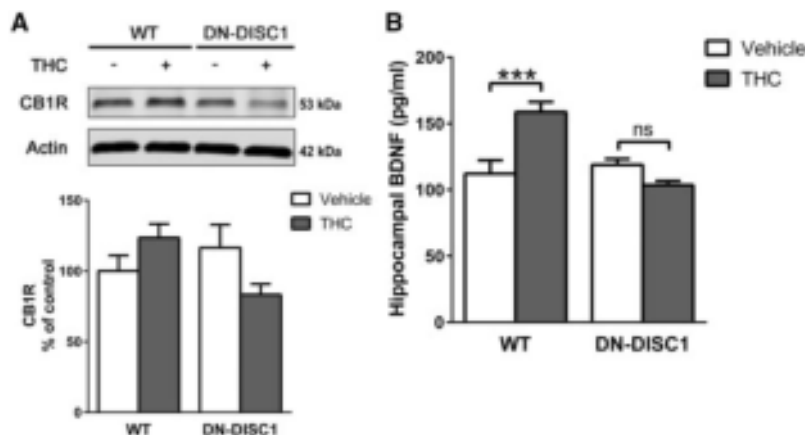


Figure 3. DISC1 interacts with THC in terms of hippocampal expression of CB1R and BDNF. (A) Synaptic CB1R levels were measured using Western blot analysis. The densitometry measurement of CB1 receptor signal was normalized to Actin. A significant genotype X exposure interaction was observed ($F_{1,33}=6.41$, $P=0.02$), but main effects of both genotype and exposure were nonsignificant ($F_{1,33}=1.14$, $P=0.29$ and $F_{1,33}=0.19$, $P=0.67$, respectively). Data were obtained from 16 dominant-negative DISC1 (DN-DISC1) males (7 Vehicle and 9 THC) and 21 wild-type (WT) males (11 Vehicle and 10 THC). (B) BDNF levels in the hippocampus were measured using ELISA. A significant genotype X exposure interaction was observed ($F_{1,35}=18.08$, $P=0.0001$). Post-hoc analysis showed that WT mice exposed to THC exhibit increased levels of hippocampal BDNF compared to vehicle-treated WT mice ($P=0.0003$), whereas THC-treated DN-DISC1 mice did not differ from vehicle-treated DN-DISC1 mice ($P=0.47$). Data were obtained from 19 DN-DISC1 males (9 Vehicle and 10 THC) and 20 WT males (11 Vehicle and 9 THC). Statistical significance was determined using two-way ANOVA followed by Tukey's post-hoc test. Data are presented as Mean \pm SEM. *** $P=0.0001$; ns = not significant.

the DN-DISC1 mice, we postulated that BDNF upsurge prevents the WT mice from developing the defective phenotype. Therefore, we over-expressed BDNF-EGFP in the hippocampus of DN-DISC1 mice using a lentiviral vector, while the control

group received a lentivirus carrying an EGFP vector. Both experimental groups were later treated sub-chronically with THC, according to the protocol conducted on the previous cohorts of mice. Therefore, both groups are referred to as DN-DISC1-THC

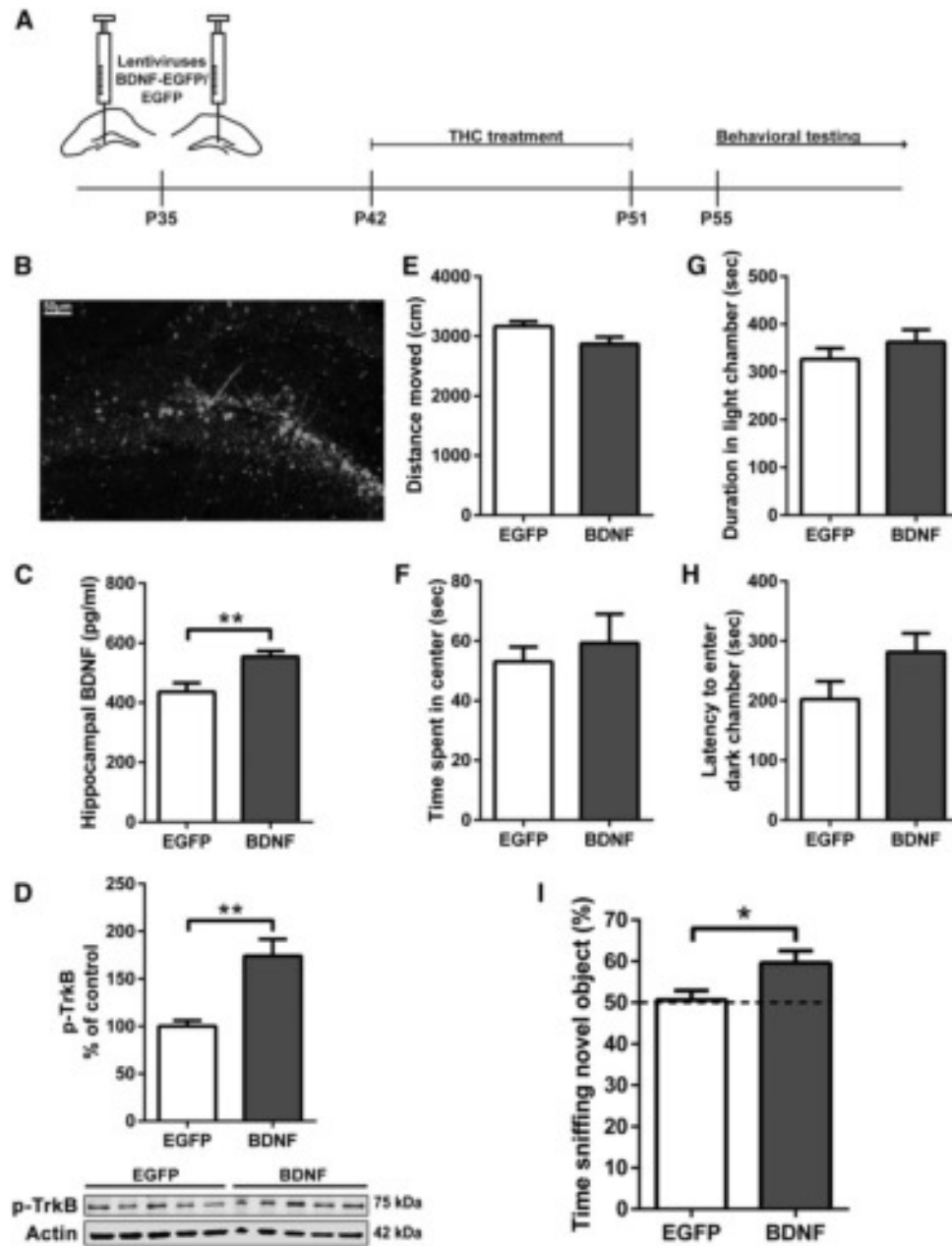


Figure 4. Hippocampal over-expression of BDNF prior to THC administration prevented the THC-induced deficit in object recognition memory in DN-DISC1 mice. (A) Experimental timeline for BDNF over-expression in the hippocampus prior to sub-chronic adolescent THC administration. (B–D) Validation of BDNF over-expression in the hippocampus. (B) Representative image of EGFP expression demonstrating the location of the stereotaxic injection of the viral vectors. EGFP positive cells under control of the neuron-specific synapsin promoter (bright) DAPI (4',6-diamidino-2-phenylindole). (C) ELISA measurement identified a significant increase of 27% in hippocampal BDNF levels ($t_{19}=3.36$, $P=0.0033$) in DN-DISC1-THC mice injected with the BDNF-EGFP vector (BDNF) compared with DN-DISC1-THC mice injected only with the EGFP vector (EGFP). (D) Western blot analysis detected a significant increase of 74% in hippocampal p-TrkB levels ($t_{19}=3.83$, $P=0.0011$), as an indication for BDNF signaling, in the BDNF mice compared with the EGFP mice. (C,D) Data were obtained from 21 DN-DISC1 males (10 EGFP and 11 BDNF). (E,F) Open field test measured for 10 min. (E) BDNF treatment did not induce alterations in locomotor activity or in (F) time spent in the center of the open field arena. (G,H) Light-dark box test. (G) BDNF treatment did not affect the time spent in the light chamber or the (H) latency to enter the dark chamber. Data were obtained from 29 DN-DISC1 males (14 EGFP and 15 BDNF). (I) Novel object recognition test. Percentage of time spent exploring the novel object relative to the total time spent exploring both objects. Dashed line represents 50% preference indicating no preference to a specific object. BDNF mice show intact preference towards the novel object compared with the EGFP mice ($t_{26}=2.35$, $P=0.026$). Data were obtained from 28 DN-DISC1 males (13 EGFP and 15 BDNF). Statistical significance was determined using two-tailed Student's *t*-test. Data are presented as Mean + SEM. * $P < 0.05$. ** $P < 0.01$. DN-DISC1-THC, dominant-negative DISC1 mice injected with $\Delta 9$ -tetrahydrocannabinol.

mice. Thereafter, mice underwent behavioral tests as conducted in the first cohort of mice (Fig. 4A).

After completion of behavioral tests, mice were sacrificed and several assays were conducted in order to validate over-expression of BDNF in the hippocampus. First, we verified the

EGFP expression in the dorsal hippocampus (Fig. 4B). In addition, hippocampal BDNF levels were determined using ELISA, and hippocampal p-TrkB, indicating BDNF signaling, were measured using western blot analysis. We detected a significant increase of 27% in hippocampal BDNF levels and a significant

increase of 74% in hippocampal p-TrkB levels in DN-DISC1-THC mice injected with the BDNF-EGFP vector (BDNF-treated DN-DISC1-THC mice) compared with DN-DISC1 mice injected only with the EGFP vector (sham-treated DN-DISC1-THC mice) (Fig. 4C and D).

Behavioral analysis revealed that, in the hippocampus-dependent novel object recognition test, BDNF-treated DN-DISC1-THC mice showed intact preference to the novel object, which was not displayed by the sham-treated DN-DISC1-THC mice (Fig. 4I). Importantly, BDNF treatment did not induce alterations in behavior in the open field test (Fig. 4E and F), or in the light-dark box test (Fig. 4G and H), as compared with the sham treatment.

Discussion

Our results suggest that sub-chronic exposure to THC in adolescence-equivalent period results in significant aberrations in behavior only in mice harboring host susceptibility (DN-DISC1 mice). This finding is consistent with the accepted view that genetic background interacts with environmental insults to induce psychopathology (gene X environment interaction) (31–33). Our study reveals a strong connection between DISC1 X THC interactions and cognitive function. DN-DISC1 mice exposed to THC showed impairments in exploratory activity, reduced performance in object recognition, a hippocampal dependent memory test, together with reduced hippocampal short-term synaptic facilitation.

As DISC1 protein is considered a hub protein that interacts with numerous intracellular proteins for multiple neural signaling cascades, likely relevant to the pathobiology of mental illness (18), it is plausible that THC-elicited cellular cascades interact with DISC1. We observed that DN-DISC1 mice fail to respond to THC administration with a BDNF surge in the hippocampus, as compared to WT mice. Furthermore, we have shown that an intervention that increases the levels of hippocampal BDNF levels ameliorates the cognitive deficit, indicating that the interaction of DISC1 with the cascade starting in THC exposure and leading eventually to BDNF induction, is involved in the cognitive deficits at the mechanistic level. The fact that BDNF introduction did not affect the behavior of the mice in the open field and light-dark box tests suggest that the effect of hippocampal BDNF over expression is more specific to the cognitive aspects investigated in this study.

BDNF was previously found to be elevated in multiple brain areas following exposure to THC (28,29), in particular in the hippocampus (30) where BDNF is well characterized as a key modulator of hippocampal synaptic plasticity (34). In addition, cannabinoid signaling induces BDNF mediated neuroprotection of striatal neurons against excitotoxicity (29). Nonetheless, the *in vivo* role for BDNF induction in response to THC exposure was unclear. This study has provided an answer to this important question. The interaction of DISC1 with the cascade from THC to BDNF leads to the loss of hippocampal BDNF surge and cognitive deficits, which is prevented by the exogenous supply of BDNF. Therefore, these results imply that the induction of BDNF after THC exposure is a homeostatic response of the host to maintain proper cognitive function against the exogenous insult. Any host factors (e.g., genetic variations) that provide vulnerability to this homeostatic and compensatory mechanism may underlie the risk for cognitive deficits and mental dysfunction elicited by THC or cannabis.

Cannabis abuse during adolescence has long been known to be a risk factor for psychosis (3), with evidence for the increased

psychotogenic effect of cannabis with high THC concentration (35). A recent study reported that cannabis imposes an even greater risk for first-episode psychosis than previously thought (12). Mechanistically, it is suggested that THC disturbs the physiological control of the endogenous cannabinoid system over glutamate and GABA release. One hypothesis is that the transient blockade of the CB1 receptor, by exposure to THC, leads to an excess of glutamate and consequently too great an influx of calcium in the postsynaptic neuron, thereby causing excitotoxicity (13). Alternatively, cannabinoid signaling dysregulation in CCK-positive CB1R-expressing GABAergic interneurons, induced by the administration of THC, may in turn result in desynchronization of neural oscillations in the gamma range (36).

Nonetheless, it was unclear how this strong environmental stressor (adolescent cannabis exposure) interacts with host factors. To address this question, some groups have exposed THC to genetic animal models that by themselves display behavioral deficits, relevant to schizophrenia and related disorders (23,32,33). Encouraged by the findings from Ballinger et al. (23), that focused on the long lasting effects in adulthood of childhood-adolescent THC use, we sought to investigate the effect of robust THC use during adolescence in the context of first episode psychosis in post adolescent-young adulthood period. Importantly, these distinct paradigms provided divergent results in terms of cognitive domains affected, as Ballinger et al. did not describe long lasting deficits in object recognition memory, but rather reported deficits in emotional memory. Importantly, the current study reveals a novel mechanism through which cannabis exerts its detrimental effect on the susceptible DN-DISC1 mutant mice.

The mechanism proposed in the present study aids in understanding of such preclinical studies. We believe that the strength of this study lies in providing an important mechanism downstream of cannabis exposure by using a host-environmental factor interaction model. Future studies may test whether BDNF-mediated improvement of THC-induced cognitive deficits is underpinned by the rescue of short-term synaptic plasticity impairments.

Our study has some limitations. The behavioral results, demonstrating significant gene X exposure interactions in some, but not all the behavioral parameters evaluated, indicate the complexity of the interaction. Specifically, we found that THC-treated DN-DISC1 mice spent more time exploring the anxiety provoking center of the open field arena and light chamber of the light-dark box. This could be conceptualized as a result of the anxiolytic effect of THC on the DN-DISC1 susceptible mice, similar to the effect seen following benzodiazepine treatment in these paradigms (37). Alternatively, it can also be interpreted as "poor judgment" or behavioral disinhibition (38) and thus as a possible indication for psychosis in the DN-DISC1 susceptible mice. Notably, animal models cannot recapitulate the complexity of schizophrenia or first episode psychosis (39), but rather serve as an efficient tool to test genetic predisposition (DISC1) to pathological states in the context of an environmental insult (THC). Therefore, we focused on the evident cognitive effect that was observed in our study. The other behavioral measures and their possible meaning in the context of psychosis- should be interpreted with caution.

To conclude, we present a mechanism mediating host susceptibility to environmental insult using a translational mouse model with possible relevance to schizophrenia onset. The development of a host-environment interaction model that utilizes perturbed DISC1 pathway as host vulnerability and THC exposure as an environmental insult, could be helpful in elucidating the

underpinning pathobiology of psychotic disorders, in discovering novel pharmacological targets, and in testing therapeutic potential of novel treatment modalities. We suggest that future studies should use the signaling pathway proposed here as a possible target for treating patients at the early stage of mental illness, and that enhancement of BDNF signaling may be a viable approach to prevent deterioration of symptoms towards full blown severe mental disease such as schizophrenia.

Materials and Methods

Animals

We used a homozygous line of dominant-negative disrupted in schizophrenia 1 (DN-DISC1) mice developed on a C57BL/6J background (24,40–42). DN-DISC1 mice express a putative dominant-negative C-terminal truncated DISC1 under the control of the α CaMKII promoter. Using this line created thorough homozygous inbreeding, we do not have littermate controls. Importantly, it was shown that the control non-littermate wild-type mice (offspring of the heterozygote DN-DISC1 mice that do not express the truncated DISC1), do not differ from C57BL/6J in various behavioral tests (24). Thus, as controls we used Wild-Type C57BL/6 (WT) mice from Harlan (Harlan Laboratories, Jerusalem, Israel).

Mice were housed in a group of 3–5 per cage. All mice were kept in a 12 h light/dark cycle and had access to food and water ad libitum. Behavioral training and testing were completed in the light cycle between 8:00 A.M and 5:00 P.M. All animal experiments and protocols were approved by the Committee for Animal Research at Tel Aviv University, Israel.

Experimental design

In the first cohort, six weeks old (\pm 5 days) male WT ($n = 22$) and DN-DISC1 ($n = 19$) mice were injected intraperitoneally with THC (10 mg/kg) or vehicle for 10 days during adolescence-equivalent period (postnatal 42–51d). Three days after the last THC administration, the behavioral effects of sub-chronic THC administration were evaluated utilizing behavioral tests to assess exploratory activity (open field, light-dark box test) and cognitive function (novel object recognition test).

For electrophysiological analysis, we used another cohort of six weeks old (\pm 5 days) male DN-DISC1 mice. The mice were injected intraperitoneally with THC (10 mg/kg) ($n = 5$) or vehicle ($n = 5$) for 10 days during adolescence-equivalent period (postnatal 42–51d). Three-four days after the last THC administration the effects of sub-chronic THC injections on hippocampal short term facilitation were evaluated using field EPSP recordings in the Schaffer Collateral (SC) of acute hippocampal slices.

In another mice cohort, five weeks old (\pm 5 days) DN-DISC1 mice were injected with lentiviral vectors carrying BDNF-EGFP ($n = 15$) or EGFP ($n = 14$) into the dorsal hippocampus. One week later (six weeks old) mice were injected intraperitoneally with 10 mg/kg THC for 10 days. Three days after the last THC administration, mice underwent behavioral tests to assess exploratory activity (open field, light-dark box test) and recognition memory (novel object recognition test).

Behavioral tests

Analysis of the behavioral testing was conducted using the EthoVision XT 10 software platform (Noldus, Wageningen, Netherlands).

Open field test

In the open field test, mice were placed in a 47×47×51 cm arena for 10 min. Total distance travelled and duration of time exploring the periphery and the center of the arena were measured using the EthoVision software.

Light-dark box test

The light-dark apparatus is a rectangular box divided into a small (27×18×30 cm) and a large (27×27×30 cm) chambers with a small entrance (6×10 cm) located in the center of the partition at floor level. The small chamber is a closed compartment painted in black (dark chamber), whereas the large chamber is transparent, open-topped and brightly illuminated (light chamber). Mice are placed in the brightly lit chamber and are allowed to freely explore both chambers for 10 min. Latency of the first crossing from the light chamber to the dark chamber and time spent in the light chamber were recorded and analyzed by EthoVision software.

Novel object recognition test

The test was conducted as reported previously (40). Briefly, mice were individually habituated to the open-field arena for three consecutive days. During the training session, two identical objects were placed in the arena and the mice were free to explore for 10 min. Following a retention period of 1 h, mice were placed back to the same arena for another 10 min while one of the objects has been replaced with a novel object different in shape and size. Duration of time spent sniffing each object was quantified by EthoVision software. Novel object preference was calculated as the percentage of time spent sniffing the novel object relative to the total time spent sniffing both objects. Mice that did not sniff any of the objects were excluded from analysis.

Electrophysiology

Coronal hippocampal slices (400 μ m) were prepared in a cold (4 °C) storage buffer containing (in mM): sucrose, 206; KCl, 2; MgSO₄, 2; NaH₂PO₄, 1.25; NaHCO₃, 26; CaCl₂, 1; MgCl₂, 1; glucose, 10. The slicing procedure was performed using a Leica VT1200 vibrating microtome as described (43). Slices were transferred to a submerged recovery chamber at room temperature containing oxygenated (95% O₂ and 5% CO₂) artificial cerebrospinal fluid (ACSF) for 1 h before recording.

Experiments were performed at room temperature in a recording chamber on the stage of an Olympus BX51WI microscope equipped with IR DIC optics. fEPSPs were recorded with a glass pipette containing Tyrode solution (1–2 M Ω) from proximal synapses in the CA1 stratum radiatum using a MultiClamp700B amplifier (Molecular Devices). Stimulation of the Schaffer Collateral pathway was delivered through a glass suction electrode (10–20 μ m tip) filled with Tyrode solution. fEPSPs were induced by single stimuli at 0.1 Hz or by bursts (5 stimuli at 50 Hz, inter-burst-interval of 30 s) as described before (44). Electrophysiological data were analyzed using pClamp10 (Molecular Devices).

Tissue Analysis

Dissection and tissue collection

For western blot and enzyme-linked immunosorbent assay (ELISA), the brains of all mice were removed and the hippocampus of each mouse were dissected, divided into left and right

hemispheres and cryopreserved at -80°C . Dissection of the mice brains was conducted using the Stainless Steel Zivic Adult Mouse Brain Slicer Matrix with 1.0 mm coronal section slice intervals (Zivic Instruments, PA, USA).

ELISA for BDNF quantification

For protein extraction, dissected hippocampi of one hemisphere were thawed, and total protein was produced as previously described (45). Protein concentration was determined using the bicinchoninic acid (BCA) kit (Thermo Scientific, Waltham, MA, USA). Quantification of BDNF levels was conducted using a BDNF specific ELISA kit (R&D Systems, Minneapolis, MN, USA) according to the manufacturer's instructions (50 μg of each sample). The absorbance at 450 and 570 nm was recorded on a Microplate Reader (LabSystems Multiskan MS).

Synaptic protein extraction and western blot analysis

Syn-PERTM Synaptic Protein Extraction Reagent (Thermo Fisher Scientific, Waltham, Massachusetts, USA) was used for extraction of proteins expressed in the synapses of the hippocampal tissues according to the manufacturer's instructions. The protein concentration of the synaptosomal fractions was quantified utilizing the PierceTM BCA Protein Assay Kit (Thermo Fisher Scientific, Waltham, Massachusetts, USA).

Proteins were separated by 4–20% Mini-PROTEAN[®] TGXTM pre-cast polyacrylamide gel (Bio-Rad Laboratories, CA, USA) electrophoresis and transferred to nitrocellulose membranes. The membranes were probed overnight at 4°C with the following primary antibodies: rabbit Anti-Cannabinoid Receptor 1 (1:1000, 17978-1-AP, proteintech, Chicago, IL, USA), rabbit Anti-TrkB (phospho Y515) (1 $\mu\text{g}/\text{ml}$, ab109684, Abcam, Cambridge, United Kingdom) and as a loading control mouse anti-Actin (1:500, MAB1501, EMD Millipore, Darmstadt, Germany). Thereafter, membranes were incubated with secondary antibodies: goat anti-mouse IRDye 680CW or 800CW and goat anti-rabbit IRDye 680CW or 800CW (1:5,000, infra-red dye, LI-COR Biosciences, NE, USA) for 1 h at room temperature. The membranes were then scanned with Odyssey Infrared Imager (model 9120, LI-COR Biosciences). Densitometric analysis of Western blots was performed using Image StudioTM Lite software (LI-COR Biosciences) to measure the area and density of protein bands

Histology

Mice were transcardially perfused, under ketamine/xylazine anesthesia, with cold phosphate-buffered saline (PBS), followed by paraformaldehyde 4% in phosphate buffer. The brains were immersed in 4% paraformaldehyde for 24 h at 4°C followed by cryoprotection in 30% sucrose for an additional 48 h. The brains were frozen in chilled 2-methylbutane (Sigma-Aldrich) and subsequently sectioned into slices measuring 10 μm . In order to demonstrate the location of the stereotaxic injection of the viral vectors carrying the EGFP gene, slides were stained with DAPI (1:500; Sigma-Aldrich) and sections were mounted with fluorescent mounting solution (Fluoromount-G, SouthernBiotech), covered with a cover slide, and sealed with nail polish. Images were taken using the Axio Imager.Z2 microscope (Zeiss, Thornwood, NY).

Preparation of viral vectors

High-titer lentiviral stocks pseudotyped with the vesicular stomatitis virus G-protein (VSV-G) were produced in HEK-293T

cells as previously described (46). In brief, HEK-293T cells were transfected with lentiviral transfer construct pLL3.7.hSyn.BDNF.IRES.EGFP.WPRE or pLL3.7.hSyn.EGFP.WPRE and packaging constructs pMDLg-pRRE, pRSV-REV and pMD2.G envelope protein construct, by means of calcium phosphate transfection. Titters were determined by transducing HEK-293T cells with serial dilutions of concentrated lentivirus. EGFP fluorescence was evaluated by flow cytometry (FACSCalibur, Becton Dickinson Immunocytometry Systems) at 72 h after transduction. The final titer of lentiviruses for administration to the mice was determined by ELISA for p24, an abundant HIV-1 virus capsid protein (Lenti-XTM p24 Rapid Titer Kit, Clontech, Mountain View, CA, USA).

Administration of viral vectors

Under ketamine/xylazine anesthesia, mice were placed in a stereotaxic frame (Kopf, Tujunga, CA), and 10^8 viral vectors (either BDNF-EGFP or EGFP alone) in 1- μl volume were injected into each hippocampus bilaterally at 0.25 $\mu\text{l}/\text{min}$ (Hamilton 701N syringe) to the following coordinates (relative to the bregma): anterior-posterior, -2mm; medial-lateral, $\pm 1.6\text{mm}$; dorsal-ventral, -2.5mm. The needle was withdrawn after 3 min.

Statistical analysis

All data are expressed as the mean + SEM. Statistical analyses were performed using a commercial software (GraphPad Prism 6). Comparisons between four treatment groups (WT + Vehicle, WT + THC, DN-DISC1 + Vehicle, DN-DISC1 + THC) were conducted using a two-way ANOVA, followed by Tukey's post-hoc test. Corrections for multiple comparisons were made when appropriate. Comparison between two groups were conducted using two-tailed t-test. For the electrophysiological study, two-way ANOVA with repeated measures was conducted. Statistical significance was considered for $P < 0.05$ in all statistical analyses.

Acknowledgements

We thank Prof. Raphael Mechoulam (Institute for Drug Research, Hebrew University of Jerusalem, Jerusalem, Israel) for generously providing us with THC for the experiments.

Conflict of Interest statement. All authors declare that there are no financial disclosures relevant to this work.

References

- Walker, E.F., Trotman, H.D., Goulding, S.M., Holtzman, C.W., Ryan, A.T., McDonald, A., Shapiro, D.I. and Brasfield, J.L. (2013) Developmental mechanisms in the prodrome to psychosis. *Dev. Psychopathol.*, **25**, 1585–1600.
- Uher, R. (2014) Gene-environment interactions in severe mental illness. *Front. Psychiatry*, **5**, 48.
- van Os, J., Rutten, B.P. and Poulton, R. (2008) Gene-environment interactions in schizophrenia: review of epidemiological findings and future directions. *Schizophr. Bull.*, **34**, 1066–1082.
- Swendsen, J., Burstein, M., Case, B., Conway, K.P., Dierker, L., He, J. and Merikangas, K.R. (2012) Use and abuse of alcohol and illicit drugs in US adolescents: results of the National Comorbidity Survey-Adolescent Supplement. *Arch. Gen. Psychiatry*, **69**, 390–398.

5. EMCDDA (2012) Prevalence of daily cannabis use in the European Union and Norway.
6. Kilmer, B. (2017) Recreational Cannabis — Minimizing the Health Risks from Legalization. *N. Engl. J. Med.*, **376**, 705–707.
7. Volkow, N.D., Compton, W.M. and Weiss, S.R.B. (2014) Adverse health effects of marijuana use. *N. Engl. J. Med.*, **371**, 879.
8. Moore, T.H.M., Zammit, S., Lingford-Hughes, A., Barnes, T.R.E., Jones, P.B., Burke, M. and Lewis, G. (2007) Cannabis use and risk of psychotic or affective mental health outcomes: a systematic review. *Lancet*, **370**, 319–328.
9. Henquet, C., Krabbendam, L., Spauwen, J., Kaplan, C., Lieb, R., Wittchen, H.-U. and van Os, J. (2005) Prospective cohort study of cannabis use, predisposition for psychosis, and psychotic symptoms in young people. *BMJ*, **330**, 11.
10. Tosato, S., Lasalvia, A., Bonetto, C., Mazzoncini, R., Cristofalo, D., De Santi, K., Bertani, M., Bissoli, S., Lazzarotto, L., Marrella, G. et al. (2013) The impact of cannabis use on age of onset and clinical characteristics in first-episode psychotic patients. Data from the Psychosis Incident Cohort Outcome Study (PICOS). *J. Psychiatr. Res.*, **47**, 438–444.
11. van Gastel, W.A., Vreeker, A., Schubart, C.D., MacCabe, J.H., Kahn, R.S. and Boks, M.P.M. (2014) Change in cannabis use in the general population: a longitudinal study on the impact on psychotic experiences. *Schizophr. Res.*, **157**, 266–270.
12. Di Forti, M., Marconi, A., Carra, E., Fraietta, S., Trotta, A., Bonomo, M., Bianconi, F., Gardner-Sood, P., O'Connor, J., Russo, M. et al. (2015) Proportion of patients in south London with first-episode psychosis attributable to use of high potency cannabis: A case-control study. *Lancet Psychiatry*, **2**, 233–238.
13. Bossong, M.G. and Niesink, R.J.M. (2010) Adolescent brain maturation, the endogenous cannabinoid system and the neurobiology of cannabis-induced schizophrenia. *Prog. Neurobiol.*, **92**, 370–385.
14. Radhakrishnan, R., Wilkinson, S.T. and D'Souza, D.C. (2014) Gone to Pot - A Review of the Association between Cannabis and Psychosis. *Front. Psychiatry*, **5**, 54.
15. Solowij, N. and Michie, P.T. (2007) Cannabis and cognitive dysfunction: parallels with endophenotypes of schizophrenia? *J. Psychiatry Neurosci.*, **32**, 30–52.
16. French, L., Gray, C., Leonard, G., Perron, M., Pike, G.B., Richer, L., Séguin, J.R., Veillette, S., Evans, C.J., Artiges, E. et al. (2015) Early Cannabis Use, Polygenic Risk Score for Schizophrenia and Brain Maturation in Adolescence. *JAMA Psychiatry*, **72**, 1002–1011.
17. Millar, J.K., Wilson-Annan, J.C., Anderson, S., Christie, S., Taylor, M.S., Semple, C.A., Devon, R.S., St Clair, D.M., Muir, W.J., Blackwood, D.H. et al. (2000) Disruption of two novel genes by a translocation co-segregating with schizophrenia. *Hum. Mol. Genet.*, **9**, 1415–1423.
18. Niwa, M., Cash-Padgett, T., Kubo, K., Saito, A., Ishii, K., Sumitomo, A., Taniguchi, Y., Ishizuka, K., Jaaro-Peled, H., Tomoda, T. et al. (2016) DISC1 a key molecular lead in psychiatry and neurodevelopment: No-More Disrupted-in-Schizophrenia. *Mol. Psychiatry*, **21**, 1488–1489.
19. Bradshaw, N.J. and Porteous, D.J. (2012) DISC1-binding proteins in neural development, signalling and schizophrenia. *Neuropharmacology*, **62**, 1230–1241.
20. Lipina, T.V. and Roder, J.C. (2014) Disrupted-In-Schizophrenia-1 (DISC1) interactome and mental disorders: impact of mouse models. *Neurosci. Biobehav. Rev.*, **45**, 271–294.
21. Schurov, I.L., Handford, E.J., Brandon, N.J. and Whiting, P.J. (2004) Expression of disrupted in schizophrenia 1 (DISC1) protein in the adult and developing mouse brain indicates its role in neurodevelopment. *Mol. Psychiatry*, **9**, 1100–1110.
22. Sawa, A., Ishizuka, K. and Katsanis, N. (2016) The potential of DISC1 protein as a therapeutic target for mental illness. *Expert Opin. Ther. Targets*, **8222**, 1–3.
23. Ballinger, M.D., Saito, A., Abazyan, B., Taniguchi, Y., Huang, C.-H., Ito, K., Zhu, X., Segal, H., Jaaro-Peled, H., Sawa, A. et al. (2015) Adolescent cannabis exposure interacts with mutant DISC1 to produce impaired adult emotional memory. *Neurobiol. Dis.*, **82**, 176–184.
24. Johnson, A.W., Jaaro-Peled, H., Shahani, N., Sedlak, T.W., Zoubovsky, S., Burruss, D., Emiliani, F., Sawa, A. and Gallagher, M. (2013) Cognitive and motivational deficits together with prefrontal oxidative stress in a mouse model for neuropsychiatric illness. *Proc. Natl. Acad. Sci. U S A*, **110**, 12462–12467.
25. Kamnitz, A., Barzilay, R., Segal, H., Taler, M., Offen, D., Gil-Ad, I., Mechoulam, R. and Weizman, A. (2014) Dominant negative DISC1 mutant mice display specific social behaviour deficits and aberration in BDNF and cannabinoid receptor expression. *World J. Biol. Psychiatry*, **15**, 76–82.
26. Broadbent, N.J., Gaskin, S., Squire, L.R. and Clark, R.E. (2010) Object recognition memory and the rodent hippocampus. *Learn. Mem.*, **17**, 5–11.
27. Mongillo, G., Barak, O. and Tsodyks, M. (2008) Synaptic theory of working memory. *Science*, **319**, 1543–1546.
28. Butovsky, E., Juknat, A., Goncharov, I., Elbaz, J., Eilam, R., Zangen, A. and Vogel, Z. (2005) In vivo up-regulation of brain-derived neurotrophic factor in specific brain areas by chronic exposure to Delta-tetrahydrocannabinol. *J. Neurochem.*, **93**, 802–811.
29. Blázquez, C., Chiarlone, A., Bellocchio, L., Resel, E., Pruunsild, P., García-Rincón, D., Sendtner, M., Timmusk, T., Lutz, B., Galve-Roperh, I. et al. (2015) The CB1 cannabinoid receptor signals striatal neuroprotection via a PI3K/Akt/mTORC1/BDNF pathway. *Cell Death Differ.*, **22**, 1618–1629.
30. Derkinderen, P., Valjent, E., Toutant, M., Corvol, J.-C., Enslin, H., Ledent, C., Trzaskos, J., Caboche, J. and Girault, J.-A. (2003) Regulation of extracellular signal-regulated kinase by cannabinoids in hippocampus. *J. Neurosci.*, **23**, 2371–2382.
31. Caspi, A. and Moffitt, T.E. (2006) Gene-environment interactions in psychiatry: joining forces with neuroscience. *Nat. Rev. Neurosci.*, **7**, 583–590.
32. Behan, A.T., Hryniewiecka, M., O'Tuathaigh, C.M.P., Kinsella, A., Cannon, M., Karayiorgou, M., Gogos, J.A., Waddington, J.L. and Cotter, D.R. (2012) Chronic adolescent exposure to delta-9-tetrahydrocannabinol in COMT mutant mice: impact on indices of dopaminergic, endocannabinoid and GABAergic pathways. *Neuropsychopharmacology*, **37**, 1773–1783.
33. Long, L.E., Chesworth, R., Huang, X.-F., McGregor, I.S., Arnold, J.C. and Karl, T. (2013) Transmembrane domain Nrg1 mutant mice show altered susceptibility to the neurobehavioural actions of repeated THC exposure in adolescence. *Int. J. Neuropsychopharmacol.*, **16**, 163–175.
34. Leal, G., Afonso, P.M., Salazar, I.L. and Duarte, C.B. (2015) Regulation of hippocampal synaptic plasticity by BDNF. *Brain Res.*, **1621**, 82–101.
35. Di Forti, M., Morgan, C., Dazzan, P., Pariante, C., Mondelli, V., Marques, T.R., Handley, R., Luzi, S., Russo, M., Paparelli, A. et al. (2009) High-potency cannabis and the risk of psychosis. *Br. J. Psychiatry*, **195**, 488–491.

36. Caballero, A. and Tseng, K.Y. (2012) Association of Cannabis Use during Adolescence, Prefrontal CB1 Receptor Signaling, and Schizophrenia. *Front. Pharmacol.*, **3**, 101.
37. Bailey, K.R. and Crawley, J.N. (2009) *Anxiety-Related Behaviors in Mice*, CRC Press/Taylor & Francis.
38. Ognibene, E., Middei, S., Daniele, S., Adriani, W., Ghirardi, O., Caprioli, A. and Laviola, G. (2005) Aspects of spatial memory and behavioral disinhibition in Tg2576 transgenic mice as a model of Alzheimer's disease. *Behav. Brain Res.*, **156**, 225–232.
39. Nestler, E.J. and Hyman, S.E. (2010) Animal models of neuropsychiatric disorders. *Nat. Neurosci.*, **13**, 1161–1169.
40. Nagai, T., Kitahara, Y., Ibi, D., Nabeshima, T., Sawa, A. and Yamada, K. (2011) Effects of antipsychotics on the behavioral deficits in human dominant-negative DISC1 transgenic mice with neonatal polyI:C treatment. *Behav. Brain Res.*, **225**, 305–310.
41. Ibi, D., Nagai, T., Koike, H., Kitahara, Y., Mizoguchi, H., Niwa, M., Jaaro-Peled, H., Nitta, A., Yoneda, Y., Nabeshima, T. et al. (2010) Combined effect of neonatal immune activation and mutant DISC1 on phenotypic changes in adulthood. *Behav. Brain Res.*, **206**, 32–37.
42. Hikida, T., Jaaro-Peled, H., Seshadri, S., Oishi, K., Hookway, C., Kong, S., Wu, D., Xue, R., Andradé, M., Tankou, S. et al. (2007) Dominant-negative DISC1 transgenic mice display schizophrenia-associated phenotypes detected by measures translatable to humans. *Proc. Natl. Acad. Sci. U S A*, **104**, 14501–14506.
43. Abramov, E., Dolev, I., Fogel, H., Ciccotosto, G.D., Ruff, E. and Slutsky, I. (2009) Amyloid-beta as a positive endogenous regulator of release probability at hippocampal synapses. *Nat. Neurosci.*, **12**, 1567–1576.
44. Gazit, N., Vertkin, I., Shapira, I., Helm, M., Slomowitz, E., Sheiba, M., Mor, Y., Rizzoli, S. and Slutsky, I. (2016) IGF-1 Receptor Differentially Regulates Spontaneous and Evoked Transmission via Mitochondria at Hippocampal Synapses. *Neuron*, **89**, 583–597.
45. Barzilay, R., Ben-Zur, T., Sadan, O., Bren, Z., Taler, M., Lev, N., Tarasenko, I., Uzan, R., Gil-Ad, I., Melamed, E. et al. (2011) Intracerebral adult stem cells transplantation increases brain-derived neurotrophic factor levels and protects against phencyclidine-induced social deficit in mice. *Transl. Psychiatry*, **1**, e61.
46. Kutner, R.H., Zhang, X.-Y. and Reiser, J. (2009) Production, concentration and titration of pseudotyped HIV-1-based lentiviral vectors. *Nat. Protoc.*, **4**, 495–505.